

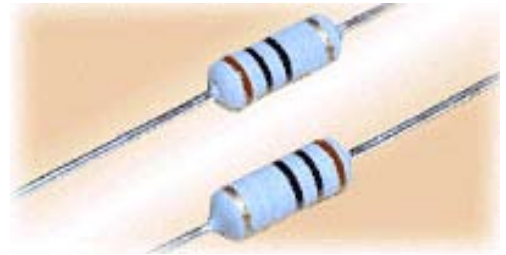


General Resistors

Anti-Surge Resistors - RCR Series / 玻璃釉膜功率电阻器

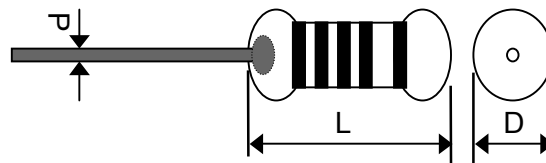
RCR Series Resistor are made by metal glaze coating on the surface of a cylindrical substrate with excellent characteristics and stable at even high resistance range.

Token offers competitive prices and are widely used in the power source protector like fluorescent's inverter, and starting resistor for Mercury Lamp. For high value resistance application, are widely used in computer and electronics, like protector of eliminate electrostatic and thunder lightning.



► RCR Resistor General Specifications

Type	Power Rating	L	D	d ± 0.05	H
RCR25	1/4W	6.5±1	2.3±0.5	0.5 ~ 0.6	26±3
RCR50	1/2W	9.5±1	3.4±0.5		
RCR100	1W	12.0±1	4.0±0.5	0.7 ~ 0.8	
RCR200	2W	16.0±1	6.1±0.5		
RCR300	3W	17.0±1	7.0±0.5		
RCR500	5W	24.0±1	8.0±0.5		
RCR1000	10W	max.50	max.10		

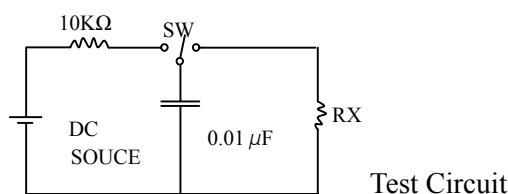


► RCR Resistor Power Rating

Type	Power Rating	Max Working Voltage	Max Overload Voltage	Dielectric With-standing Voltage	TCP. (ppm/°C)	Resistance Range E24. J(±5%)(Ω)	Operating Temp. range
RCR25	1/4W	500V	700V	500V	±350	1 ~ 33M	-20°C~+155°C
RCR50	1/2W	1000V	1500V	600V	±350	1 ~ 68M	
RCR100	1W	1500V	2500V	800V	±350	1 ~ 100M	
RCR200	2W	2000V	3000V	800V	±350	1 ~ 100M	
RCR300	3W	2500V	4000V	1000V	±350	1 ~ 100M	
RCR500	5W	3000V	5000V	1000V	±350	1 ~ 100M	

► Loading Conditions

Power	Resistance Range (Ω)	Surge Voltage	Anti-Surge Characteristics	Surge Test Condition
0.25 W	50K < R	3KV	(2.5 Sec. ON + 2.5 Sec. Off) × 10 Cycles ΔR ≤ ±(50%R+0.1Ω)	In accordance with IEC65 Safety specification.
0.5 W	10K ≤ R < 100K	3KV		
	100K ≤ R < 360K	5KV		
	360K ≤ R < 1M	7KV		
	1M ≤ R	10KV		





General Resistors

► **How to Order**

RCR50

❶

1/2W

❷

220KR

❸

J

❹

TB/P

❺

- ❶ Product type
- ❷ Rated Power (W)
- ❸ Resistance Value (Ω)
- ❹ Resistance Tolerance (%)
- ❺ Packaging

